



**College of Education**

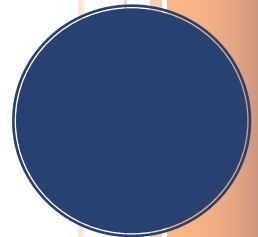
# DATA REPORT 2012

## *Sport Management*

This document contains aggregated candidate data collected at admission, clinical experience, and completion as well as program level on key quantitative variables. The intended uses of these data include identifying areas of strength, areas for improvement, indicators of progress, and as an aid for annual planning.

**UNIVERSITY OF WEST GEORGIA**

**8/8/12**



# DATA REPORT 2012

## SPORT MANAGEMENT

### SECTION 1: PROGRAM DATA

#### *List of Assessments*

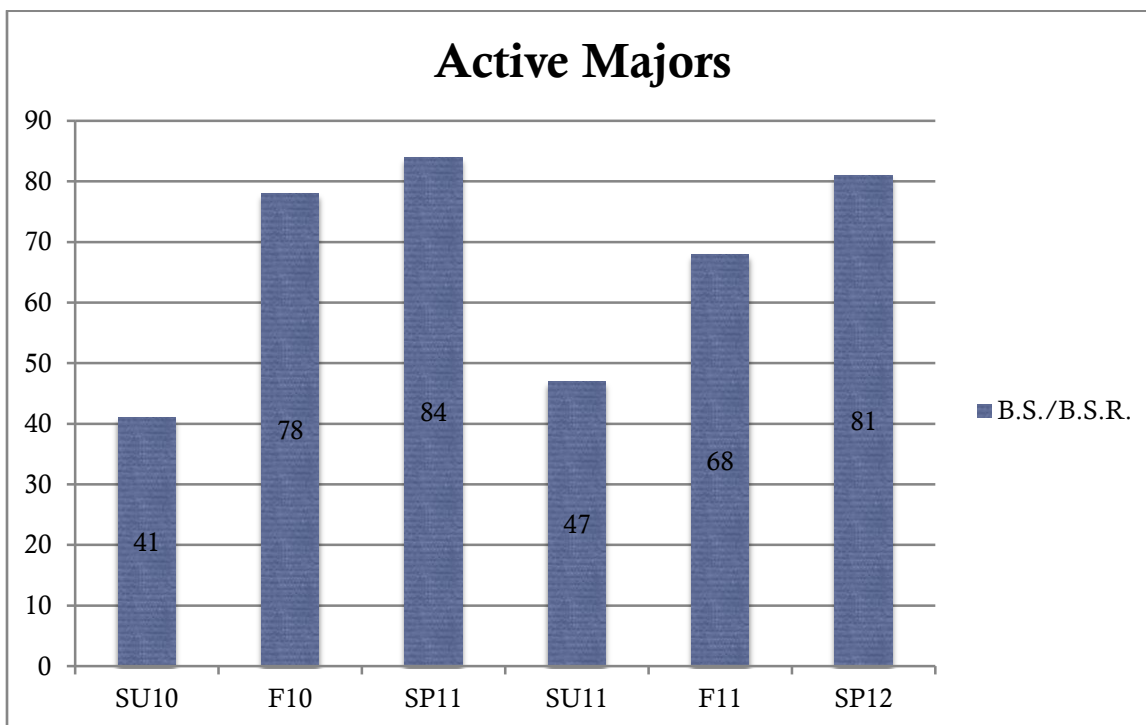
Please review the assessments listed below and submit corrections, additions, or deletions to the Assessment Office by the second Friday in September for fall term assessments.

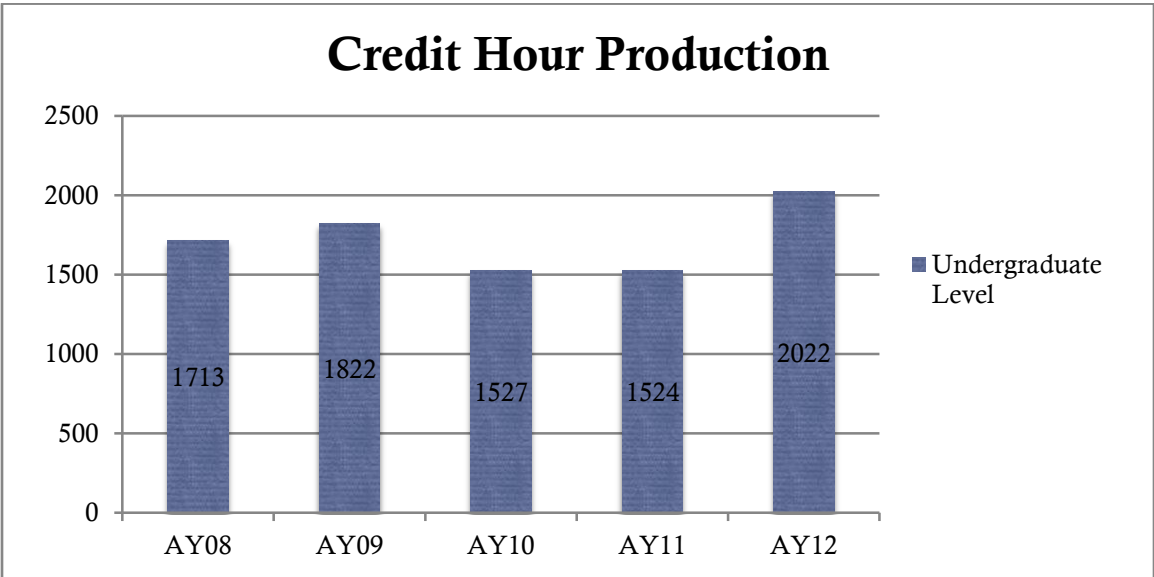
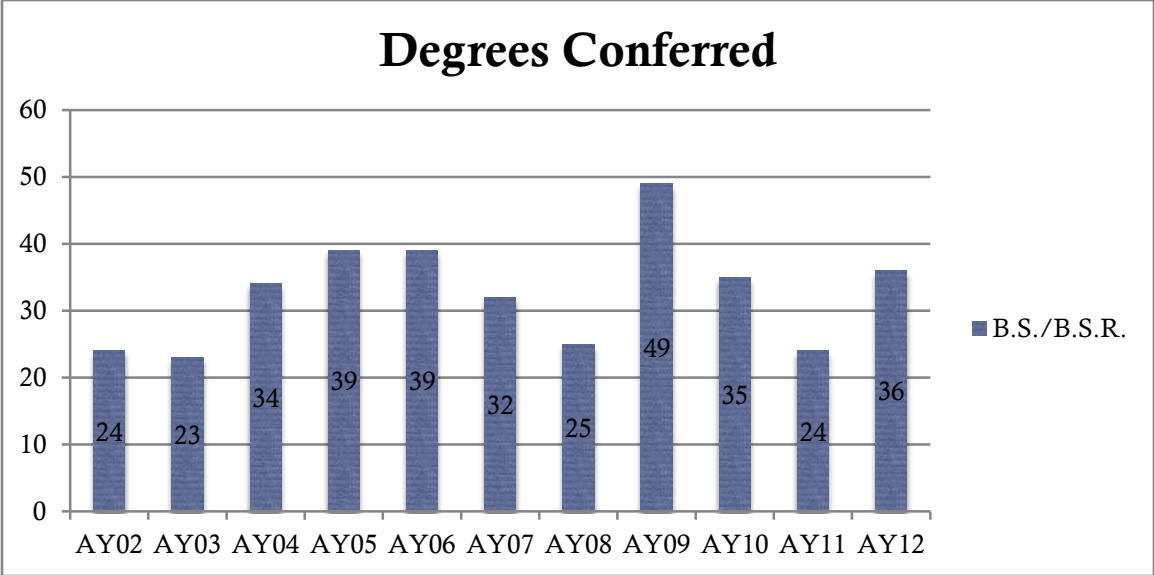
<b>Bachelor's</b>
Completion of Core Curriculum
Completion of Area F
Completion of Introductory Course
Grade Point Average
Professional Dispositions (PD Rubric)
Sport Management Content Exam 1 (SMCE1)
Completion of the Regents' Exams
Completion of the U.S. and Georgia History and Constitution Requirements
Grade of "C" or Better in all Sport Management Courses
Related Content
Written Communication Skills
Oral Communication Skills
Sport Management Content Exam 2 (SMCE2)
Professional Dispositions (Internship Evaluation)
Written Communication Skills (Internship Evaluation)
Oral Communication Skills (Internship Evaluation)
Content Knowledge (Internship Evaluation)

***SMART Goals, 2011-2012***

<b>SMART Goals-SPMG B.S.</b>	<b>How Assessed?</b>	<b>When?</b>
Remove professional disposition assessments from SPMG 2600	N/A	N/A
Use grades from ENGL 1101, 1102 for written communication score at program admission	N/A	N/A
Use grades from 1101 for oral communication score at program admission	N/A	N/A
Use instructor ratings only for professional dispositions: SPMG 3660 (Fall) SPMG 36662 (Spring) SPMG 4584 (Fall/ Spring)	N/A	N/A

***Program Productivity Data***





## SECTION II: CANDIDATE DATA

### Admission GPA 2011-2012 (Transition Point 1)

Bachelor's

\*Not yet available

### Exit GPA 2011-2012 (Transition Point 4)

Bachelor's

3.10

## CLINICAL EXPERIENCES

### Internship Completion Rates

Semester	Number Started	Number Completed	Percent Finished
Fall 2010	4	4	100%
Spring 2011	9	9	100%
Summer 2011	8	8	100%
Fall 2011	0	0	0
Spring 2012	19	19	100%

## FOLLOW-UP: GACE CONTENT EXAMS (TRANSITION POINT 5)

**NOT APPLICABLE FOR THIS PROGRAM**