



College of Education

DATA REPORT 2011

Speech Language Pathology

This document contains aggregated candidate data collected at admission, clinical experience, and completion as well as program level on key quantitative variables. The intended uses of these data include identifying areas of strength, areas for improvement, indicators of progress, and as an aid for annual planning.

UNIVERSITY OF WEST GEORGIA

6/23/11

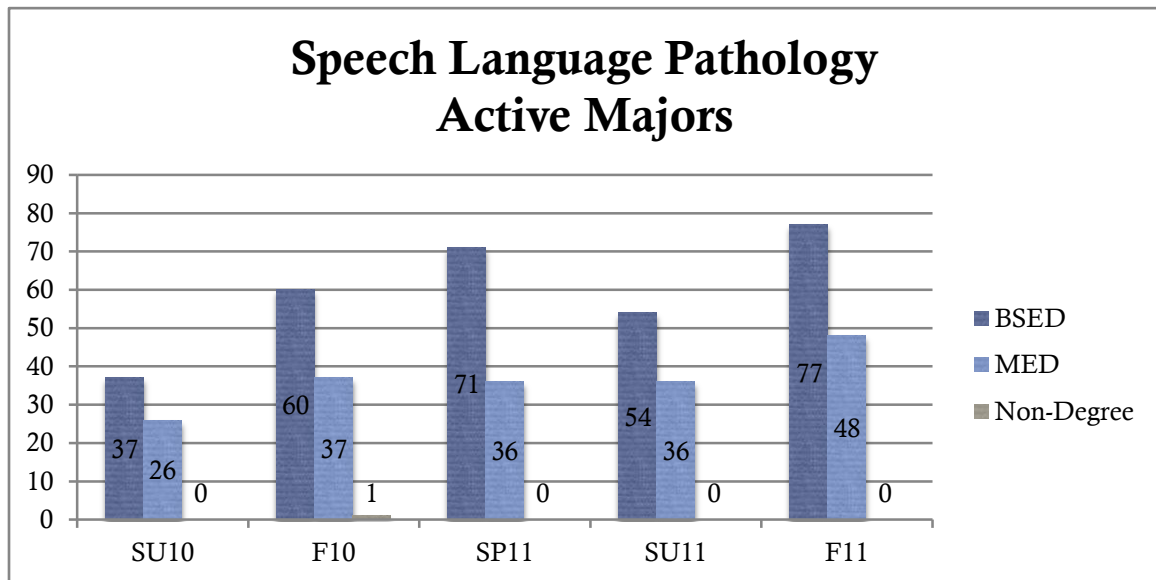


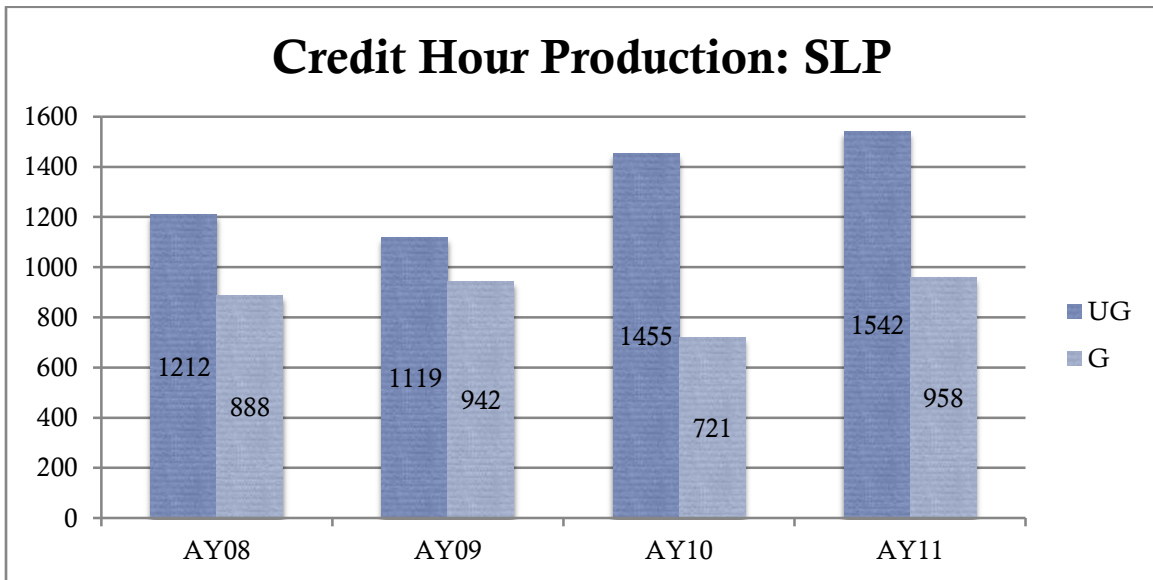
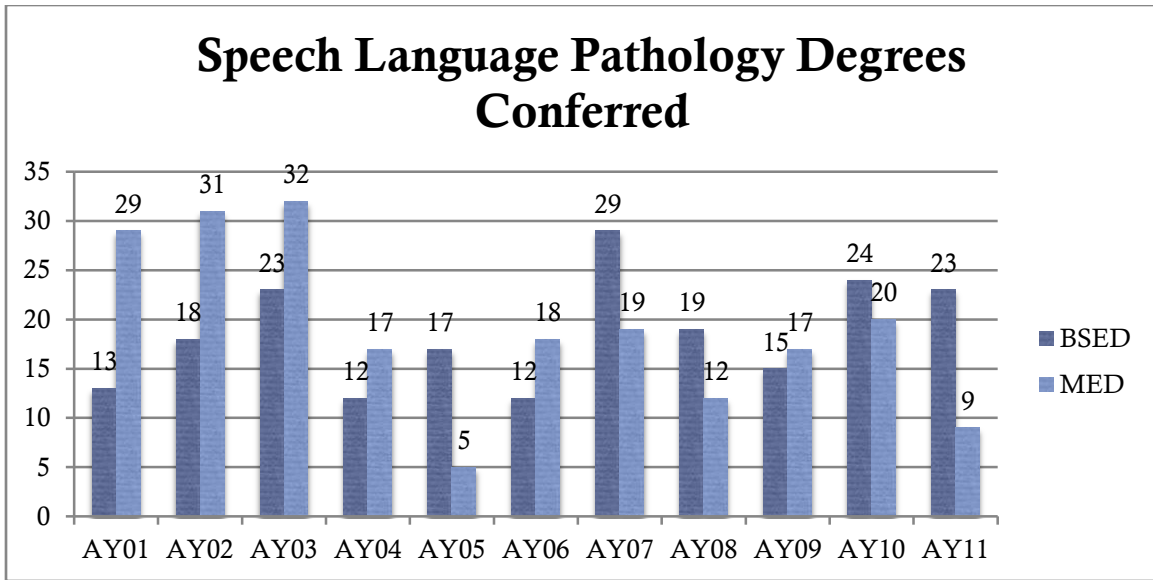
DATA REPORT 2011

SPEECH LANGUAGE PATHOLOGY

SECTION 1: PROGRAM DATA

Speech Language Pathology: List of Assessments





SECTION II: CANDIDATE DATA

ADMISSION

Entry GPA

Program	2009	2010
Bachelor's	3.25	2.52
Master's	3.38	3.49

GACE Basic Skills Overview*

***Results are reported for candidates prior to Teacher Education admission; consequently no disaggregation by program is possible.**

Test	Subarea #	Objective Type	Objective Name	# of Takers - UWG	Objective Score - UWG	# of Takers - GA	Objective Score - GA
Basic Skills-Reading	1	M/C	Analyze the relationship among ideas in written material.	626	71%	6897	72%
Basic Skills-Reading	1	M/C	Determine the meaning of words and phrases.	626	76%	6897	78%
Basic Skills-Reading	1	M/C	Identify a writer's purpose and point of view.	626	75%	6897	74%
Basic Skills-Reading	1	M/C	Understand the main idea and supporting details in written material.	626	74%	6897	74%
Basic Skills-Reading	1	M/C	Use critical reasoning skills to evaluate written material.	626	73%	6897	73%
Basic Skills-Reading	1	M/C	Use reading strategies to comprehend written materials.	626	69%	6897	69%
Basic Skills-Math	1	M/C	Understand measurement concepts and principles of geometry.	628	76%	6861	75%
Basic Skills-Math	1	M/C	Understand number properties and number operations.	628	82%	6861	82%

Basic Skills-Math	1	M/C	Understand problem-solving principles and techniques.	628	81%	6861	81%
Basic Skills-Math	1	M/C	Understand statistical concepts and data analysis and interpretation.	628	77%	6861	77%
Basic Skills-Writing	1	M/C	Recognize effective organization in writing.	630	75%	7002	77%
Basic Skills-Writing	1	M/C	Recognize effective sentences.	630	67%	7002	67%
Basic Skills-Writing	1	M/C	Recognize Standard American English usage.	630	79%	7002	79%
Basic Skills-Writing	1	M/C	Recognize unity, focus, and development in writing.	630	80%	7002	80%

CLINICAL EXPERIENCES

TEFEE Results: Initial Certification

Semester	Required Professional Behaviors	Professional Behaviors & Dispositions	Pedagogy & Knowledge	Management
Fall 2010	N/A	N/A	N/A	N/A
Spring 2011	N/A	N/A	N/A	N/A

EXIT (PRAXIS)

The results reported here are for Praxis Test. Results reported are from all takers from the University of West Georgia between 2005 and the present.

Pass Rates-Praxis

Program Year	Passing Score	# Exams Taken	# Individuals	Mean Score	# Passing	% Passing	Median Score
2005-2006	600	58	50	615.60	34	68%	610
2006-2007	600	69	58	624.14	41	70.69%	620
2007-2008	600	52	35	610.86	23	65.71%	610
2008-2009	600	56	49	630.41	36	73.47%	630
2009-2010	600	46	44	651.36	33	75%	650
2010-2011	600	50	43	635.35	35	81.4%	640

Category Scores

2008-2009

Category	Points Available Range	Natl Avg % Correct	State % Correct	UWG % Correct	1 st Quartile (Lowest) %	2 nd Quartile %	3 rd Quartile %	4 th Quartile (Highest) %
I: Basic Human Processes	21-21	57.47%	50.60%	54.76%	0%	50%	50%	0%
II: Phonological & Labg Disord	21-23	70.72%	62.50%	69.57%	25%	25%	25%	25%
III: Speech Disorders	14-15	62.04%	58.04%	66.07%	0%	0%	75%	25%
IV: Neurogenic Disorders	20-22	54.07%	47.50%	53.75%	25%	0%	50%	25%
V: Audiology/Hearing	5-7	69.57%	55.36%	57.14%	25%	25%	50%	0%

VI: Clinical Mgt	22-22	55.88%	46.59%	56.82%	0%	25%	50%	25%
VII: Prof Iss/ Psychometrics/Research	11-11	66.53%	61.36%	54.55%	50%	25%	25%	0%

2009-2010

Category	Points Available Range	Natl Avg % Correct	State % Correct	UWG % Correct	1 st Quartile (Lowest) %	2 nd Quartile %	3 rd Quartile %	4 th Quartile (Highest) %
I: Basic Human Processes	19-21	60.58%	55.93%	52.21%	58.82%	0%	29.41%	11.76%
II: Phonological & Labg Disord	18-24	78.57%	75.38%	73.27%	29.41%	23.53%	23.53%	23.53%
III: Speech Disorders	14-16	72.89%	67.01%	62.83%	23.53%	29.41%	29.41%	17.65%
IV: Neurogenic Disorders	20-22	68.88%	66.29%	65.66%	29.41%	11.76%	29.41%	29.41%
V: Audiology/ Hearing	5-7	69.81%	62.26%	63.67%	5.88%	17.65%	47.06%	29.41%
VI: Clinical Mgt	21-23	68.35%	66.05%	66.73%	23.53%	29.41%	23.53%	23.53%
VII: Prof Iss/ Psychometrics/Research	9-12	77.29%	74.89%	71.71%	35.29%	17.65%	17.65%	29.41

2010-2011

Category	Points Available Range	Natl Avg % Correct	State % Correct	UWG % Correct	1 st Quartile (Lowest) %	2 nd Quartile %	3 rd Quartile %	4 th Quartile (Highest) %
I: Basic Human Processes	19-21	62.88%	55.80%	54.95%	14.29%	35.71%	28.57%	21.43%
II: Phonological & Labg Disord	21-24	75.71%	67.11%	65.08%	35.71%	35.71%	14.29%	14.29%
III: Speech Disorders	14-16	71.77%	65.31%	64.91%	21.43%	21.43%	50%	7.14%
IV: Neurogenic Disorders	20-22	68.26%	65.46%	69.97%	7.14%	21.43%	21.43%	50%

V: Audiology/ Hearing	5-7	66.26%	59.61%	61.05%	21.43%	28.57%	14.29%	35.71%
VI: Clinical Mgt	21-22	68.99%	61.52%	63.64%	35.71%	21.43%	28.57%	14.29%
VII: Prof Iss/ Psychometri cs/Research	9-11	76.52%	74.33%	73.40%	7.14%	42.86%	28.57%	21.43%