



College of Education

DATA REPORT 2011

Special Education

This document contains aggregated candidate data collected at admission, clinical experience, and completion as well as program level on key quantitative variables. The intended uses of these data include identifying areas of strength, areas for improvement, indicators of progress, and as an aid for annual planning.

UNIVERSITY OF WEST GEORGIA

6/23/11



DATA REPORT 2011

SPECIAL EDUCATION

SECTION 1: PROGRAM DATA

Special Education (General Curriculum Initial): List of Assessments

GACE Content Test (Georgia Content Test) (Content Knowledge)*

Evaluation of Selected EP Artifacts – Content (Content Knowledge)

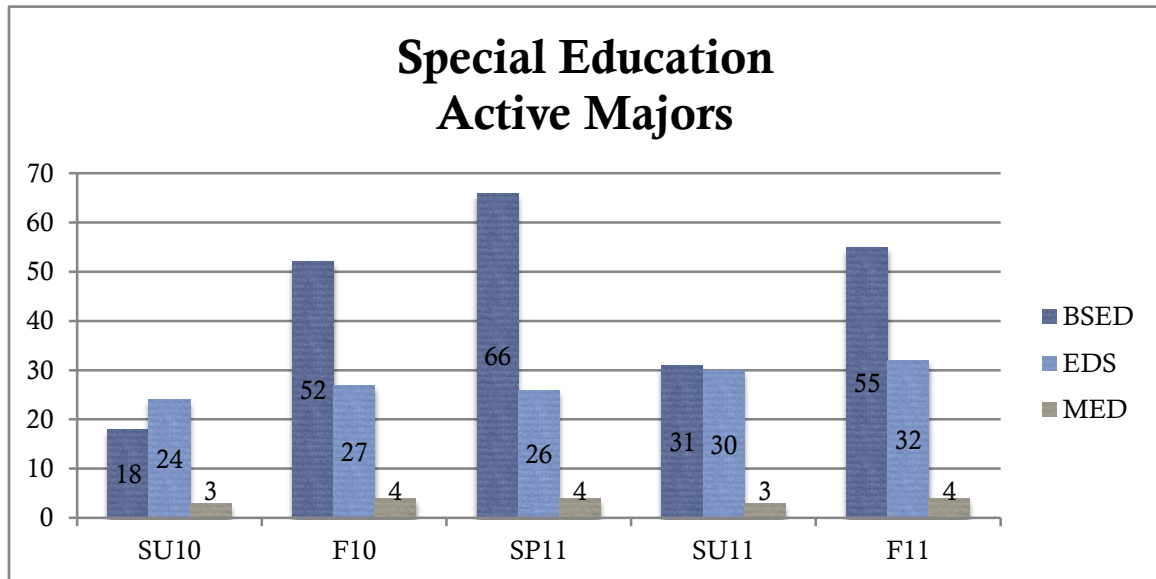
Evaluation of Selected EP Artifacts- Planning (Planning)

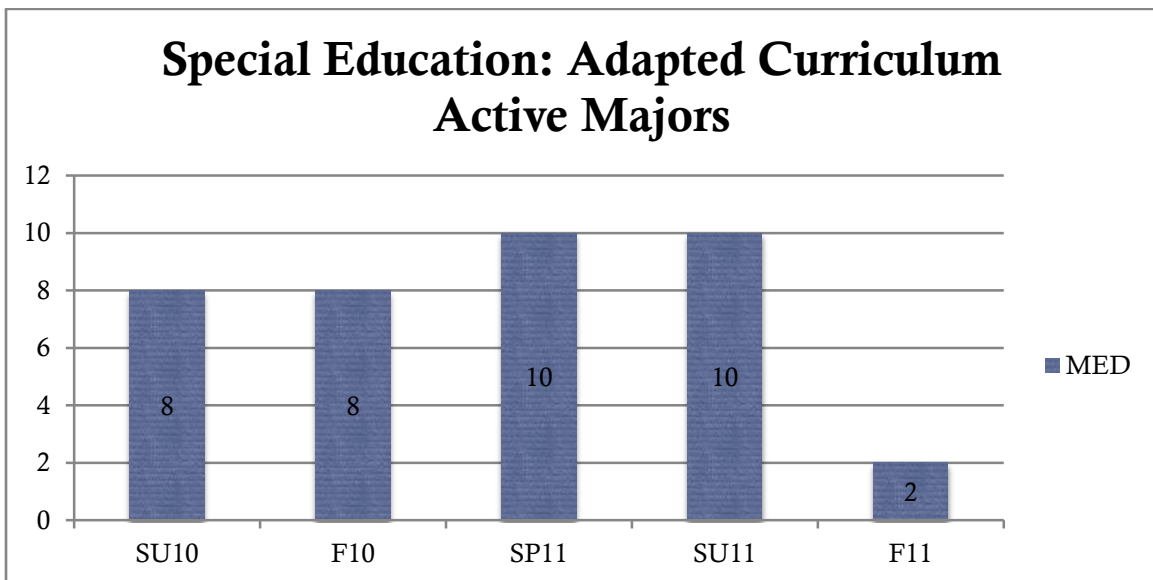
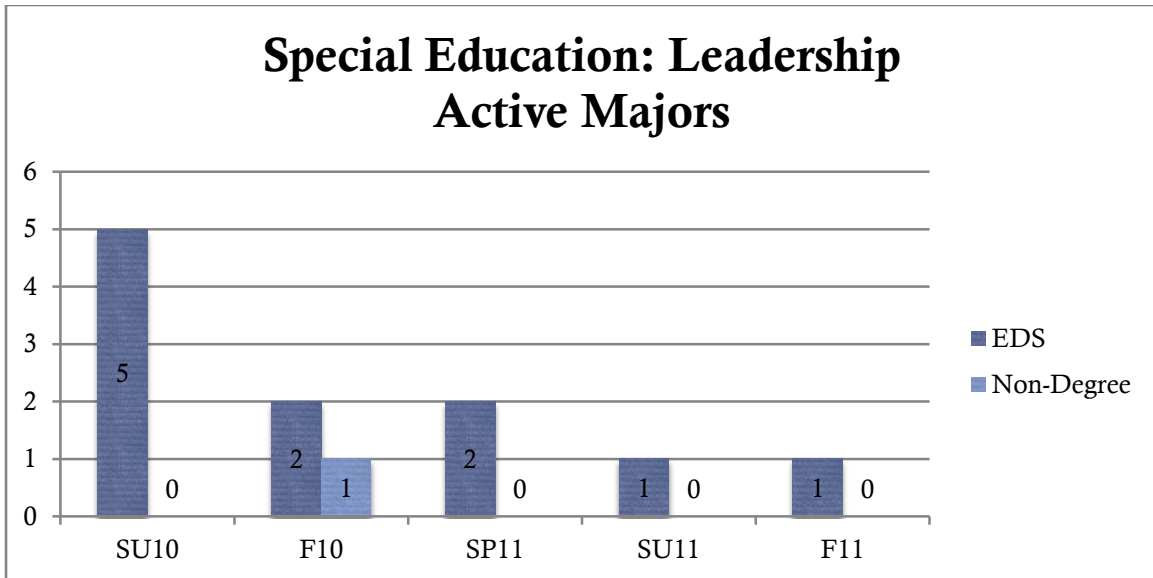
Teacher Education Field Experience Evaluation (TEFEE) (Clinical Practice)*

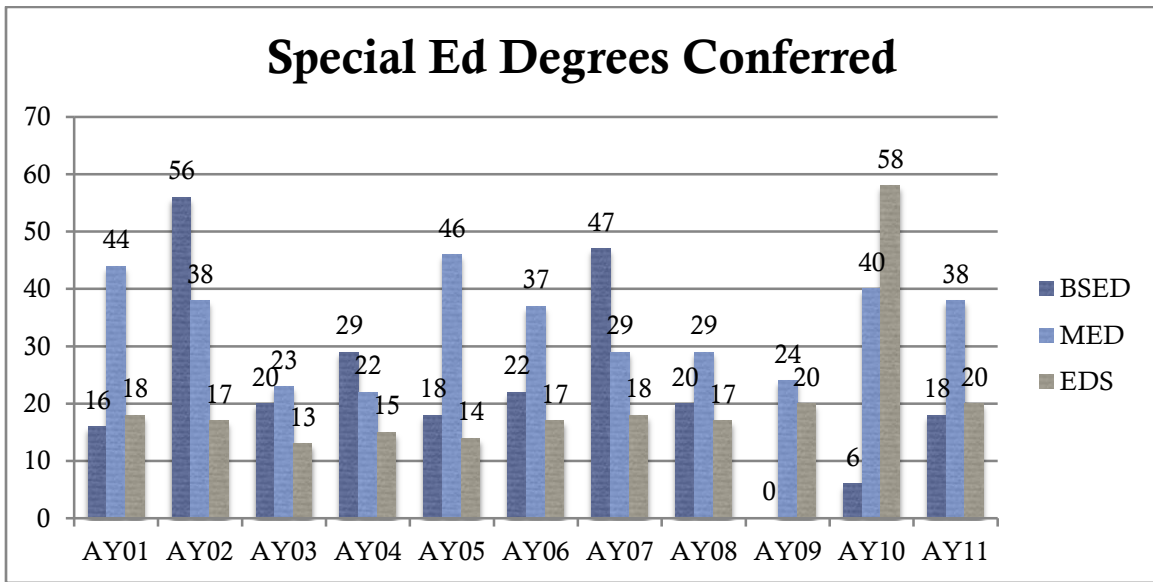
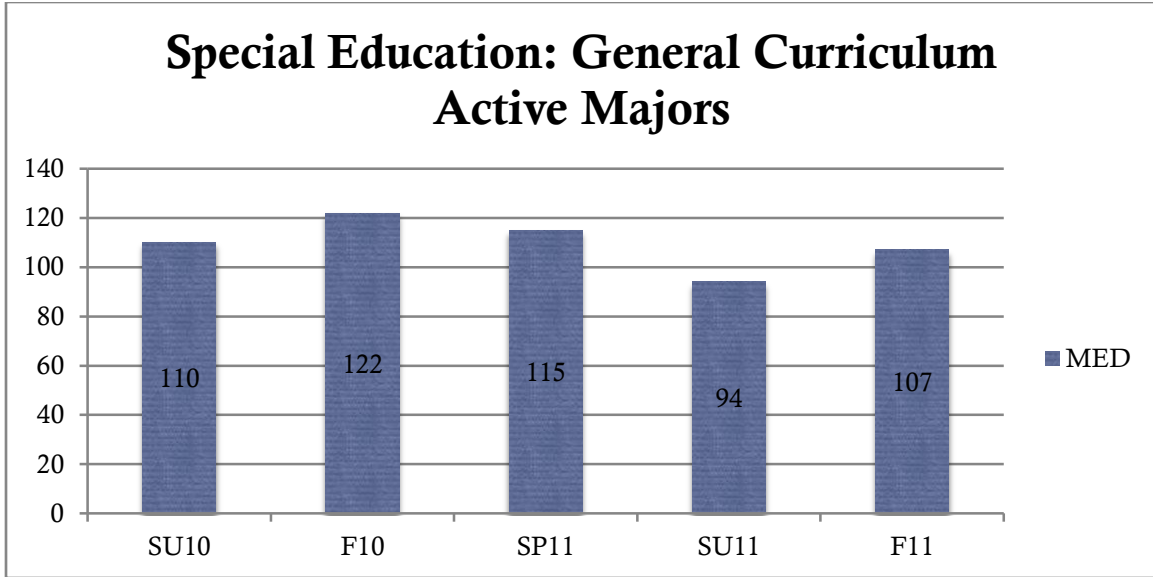
Evaluation of Selected EP Artifacts- Child Change (Effects on Student Learning)

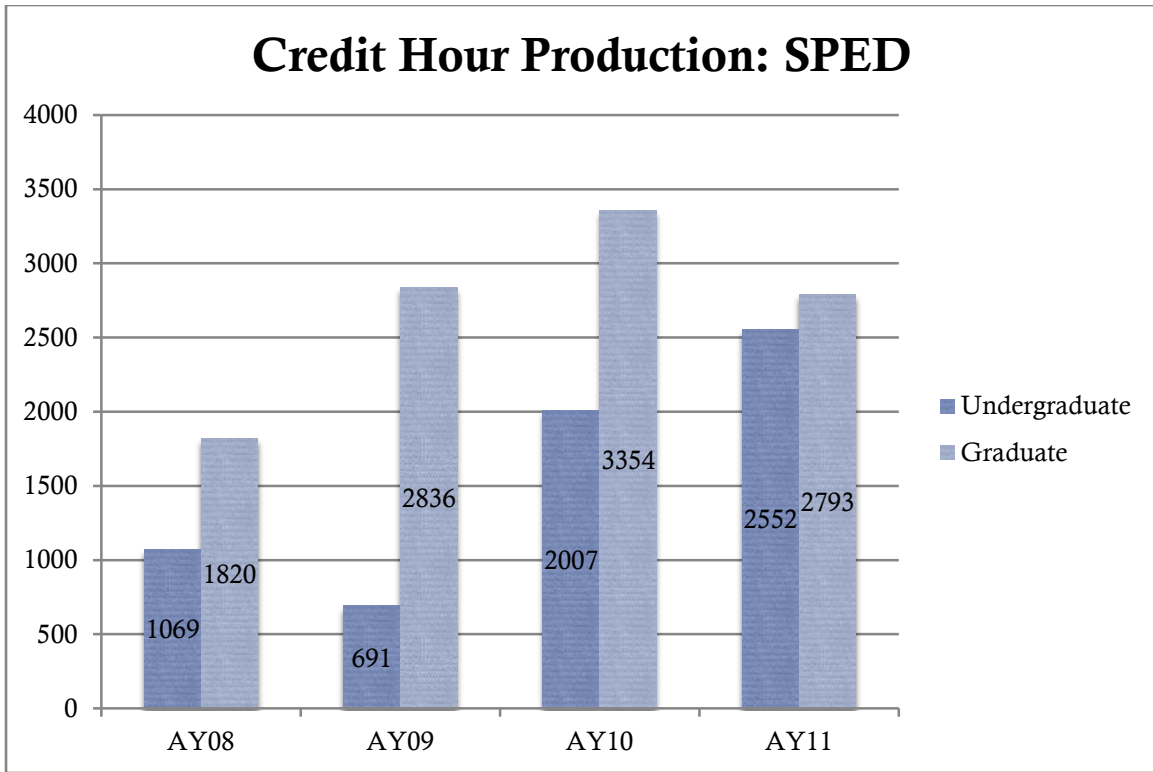
Dispositions (Dispositions)

BOR Follow-Up (Institutional Assessment)









SECTION II: CANDIDATE DATA

ADMISSION

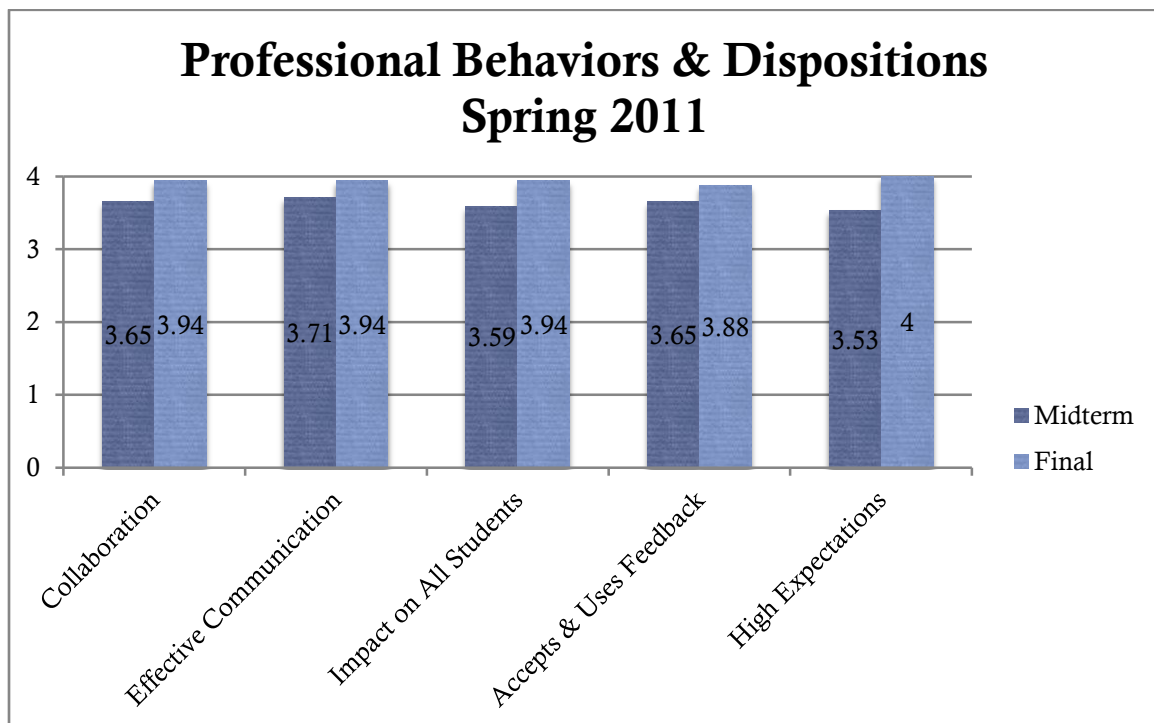
Entry GPA

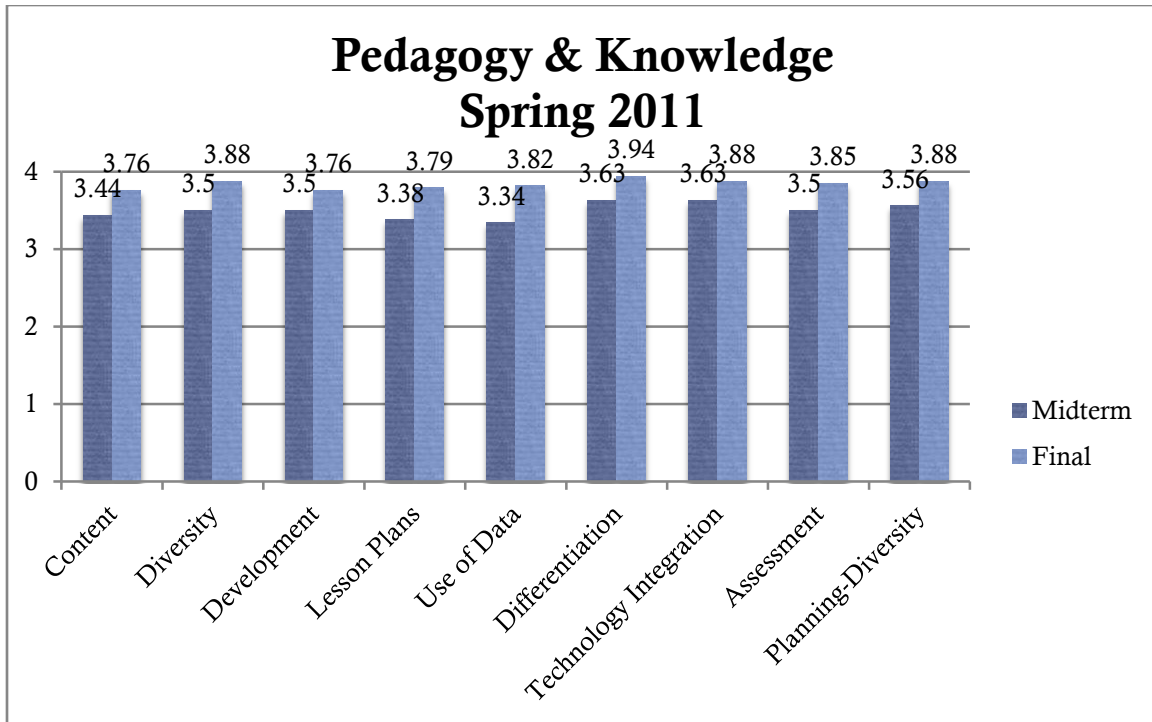
| Program | 2009 | 2010 |
|---------------|------|------|
| Bachelor's | 3.02 | 2.55 |
| Master's | 2.97 | 2.67 |
| Ed Specialist | 3.76 | 3.81 |

CLINICAL EXPERIENCES

TEFEE Results: Initial Certification

| Semester | Required Professional Behaviors | Professional Behaviors & Dispositions | Pedagogy & Knowledge | Management |
|-------------|---------------------------------|---------------------------------------|----------------------|------------|
| Fall 2010 | N/A | N/A | N/A | N/A |
| Spring 2011 | 3.82 | 3.79 | 3.69 | 3.80 |





EXIT (GACE CONTENT)

The results reported here are for GACE Content Tests General and Adapted Curriculum. Results reported are from all takers who identified themselves as seniors at The University of West Georgia between 2006 and the present.

PASS RATES

Adapted Curriculum

| Program Year | TEST 1 | | | | | |
|----------------|------------------|-----------------|---------------|----------------|---------------|-------------|
| | Pass Rate - UWG. | # Takers - UWG. | # Pass - UWG. | Pass Rate - GA | # Takers - GA | # Pass - GA |
| All Selections | 94% | 31 | 29 | 94% | 191 | 179 |
| 2006-2007 | 100% | 17 | 17 | 98% | 44 | 43 |
| 2007-2008 | - | 4 | Low N | 91% | 32 | 29 |
| 2008-2009 | - | 0 | Low N | 93% | 45 | 42 |
| 2009-2010 | - | 2 | Low N | 94% | 35 | 33 |
| Program YTD | - | 8 | Low N | 91% | 35 | 32 |

| | TEST 2 | | | | | |
|-----------------------|-------------------------|------------------------|----------------------|-----------------------|----------------------|--------------------|
| Program Year | Pass Rate - UWG. | # Takers - UWG. | # Pass - UWG. | Pass Rate - GA | # Takers - GA | # Pass - GA |
| All Selections | 81% | 31 | 25 | 87% | 190 | 165 |
| 2006-2007 | 82% | 17 | 14 | 89% | 44 | 39 |
| 2007-2008 | - | 3 | Low N | 80% | 30 | 24 |
| 2008-2009 | - | 1 | Low N | 83% | 46 | 38 |
| 2009-2010 | - | 2 | Low N | 97% | 35 | 34 |
| Program YTD | - | 8 | Low N | 86% | 35 | 30 |

General Curriculum

| | TEST 1 | | | | | |
|-----------------------|-------------------------|------------------------|----------------------|-----------------------|----------------------|--------------------|
| Program Year | Pass Rate - UWG. | # Takers - UWG. | # Pass - UWG. | Pass Rate - GA | # Takers - GA | # Pass - GA |
| All Selections | 91% | 58 | 53 | 92% | 1,162 | 1,072 |
| 2006-2007 | 100% | 11 | 11 | 95% | 299 | 283 |
| 2007-2008 | - | 4 | Low N | 93% | 204 | 190 |
| 2008-2009 | - | 3 | Low N | 92% | 194 | 179 |
| 2009-2010 | 100% | 17 | 17 | 92% | 248 | 227 |
| Program YTD | 83% | 23 | 19 | 89% | 217 | 193 |

| | TEST 2 | | | | | |
|-----------------------|-------------------------|------------------------|----------------------|-----------------------|----------------------|--------------------|
| Program Year | Pass Rate - UWG. | # Takers - UWG. | # Pass - UWG. | Pass Rate - GA | # Takers - GA | # Pass - GA |
| All Selections | 84% | 57 | 48 | 89% | 1,143 | 1,014 |
| 2006-2007 | 100% | 11 | 11 | 91% | 298 | 270 |
| 2007-2008 | - | 3 | Low N | 89% | 195 | 173 |
| 2008-2009 | - | 3 | Low N | 92% | 193 | 177 |
| 2009-2010 | 82% | 17 | 14 | 87% | 245 | 212 |
| Program YTD | 83% | 23 | 19 | 86% | 212 | 182 |

OBJECTIVES SUMMARY

| Test | Subarea # | Objective Type | Objective Name | # of Takers - UWG | Objective Score - UWG | # of Takers - GA | Objective Score - GA |
|---------------------------|-----------|----------------|---|-------------------|-----------------------|------------------|----------------------|
| SpEd Adapt Curric Test I | 1 | M/C | Understand characteristics, causes, and prevention of significant developmental disabilities. | 31 | 69% | 191 | 70% |
| SpEd Adapt Curric Test I | 1 | M/C | Understand human development. | 31 | 83% | 191 | 81% |
| SpEd Adapt Curric Test I | 1 | M/C | Understand the educational implications of various factors that affect learning and development in students with significant developmental disabilities. | 31 | 84% | 191 | 87% |
| SpEd Adapt Curric Test I | 1 | M/C | Understand the effects of significant developmental disabilities on students' social development and development of functional living skills (e.g., independent living, recreation and leisure skills, other adaptive behaviors). | 31 | 75% | 191 | 82% |
| SpEd Adapt Curric Test I | 2 | M/C | Understand how to interpret and communicate assessment results and evaluate and monitor student progress. | 31 | 71% | 191 | 70% |
| SpEd Adapt Curric Test I | 2 | M/C | Understand procedures for determining eligibility for special education and related services for students with significant developmental disabilities. | 31 | 74% | 191 | 74% |
| SpEd Adapt Curric Test I | 2 | M/C | Understand procedures for developing, implementing, evaluating, and amending Individualized Education Programs (IEPs), Individualized Family Service Plans (IFSPs), and transition plans. | 31 | 75% | 191 | 75% |
| SpEd Adapt Curric Test I | 2 | M/C | Understand types and characteristics of assessment instruments and methods. | 31 | 72% | 191 | 75% |
| SpEd Adapt Curric Test I | 2 | M/C | Understand uses of instructional technologies and assistive technologies to support the communication and learning of students with significant developmental disabilities. | 31 | 75% | 191 | 76% |
| Test | Subarea # | Objective Type | Objective Name | # of Takers - UWG | Objective Score - UWG | # of Takers - GA | Objective Score - GA |
| SpEd Adapt Curric Test II | 1 | M/C | Understand how to plan and implement instruction in a safe, supportive, and inclusive classroom environment that promotes the learning and development of students with significant developmental disabilities. | 29 | 71% | 185 | 73% |

| | | | | | | | |
|---------------------------|-----------|----------------|--|-------------------|-----------------------|------------------|----------------------|
| SpEd Adapt Curric Test II | 1 | M/C | Understand strategies and techniques for promoting the development of communication and literacy skills in students with significant developmental disabilities. | 29 | 65% | 185 | 69% |
| SpEd Adapt Curric Test II | 1 | M/C | Understand strategies and techniques for promoting the development of independent functional living skills in students with significant developmental disabilities. | 29 | 76% | 185 | 73% |
| SpEd Adapt Curric Test II | 1 | M/C | Understand strategies and techniques for promoting the development of social and self-determination skills in students with significant developmental disabilities. | 29 | 72% | 185 | 76% |
| SpEd Adapt Curric Test II | 1 | M/C | Understand the development and implementation of effective behavior-management and intervention strategies. | 29 | 76% | 185 | 79% |
| SpEd Adapt Curric Test II | 2 | M/C | Understand how to collaborate with others to support students' transitions. | 29 | 68% | 185 | 71% |
| SpEd Adapt Curric Test II | 2 | M/C | Understand how to communicate and collaborate with colleagues, administrators, service providers, and community agencies to help students with significant developmental disabilities achieve desired learning outcomes. | 29 | 90% | 185 | 89% |
| SpEd Adapt Curric Test II | 2 | M/C | Understand how to communicate and collaborate with students and their families to help achieve desired learning outcomes. | 29 | 78% | 185 | 80% |
| SpEd Adapt Curric Test II | 2 | M/C | Understand the historical and social foundations of special education, key issues and trends, roles and responsibilities, and legal and ethical issues. | 29 | 78% | 185 | 73% |
| Test | Subarea # | Objective Type | Objective Name | # of Takers - UWG | Objective Score - UWG | # of Takers - GA | Objective Score - GA |
| SpEd Gen Curric Test I | 1 | M/C | Understand factors affecting learning and development of students with disabilities. | 58 | 75% | 1150 | 78% |
| SpEd Gen Curric Test I | 1 | M/C | Understand human development. | 58 | 67% | 1150 | 65% |
| SpEd Gen Curric Test I | 1 | M/C | Understand the various characteristics and needs of students with disabilities. | 58 | 74% | 1150 | 74% |

| | | | | | | | |
|-------------------------|-----------|----------------|---|-------------------|-----------------------|------------------|----------------------|
| SpEd Gen Curric Test I | 2 | M/C | Understand how to interpret and communicate assessment results. | 58 | 74% | 1150 | 76% |
| SpEd Gen Curric Test I | 2 | M/C | Understand procedures for conducting assessment activities to address the individual needs of students with disabilities. | 58 | 59% | 1150 | 67% |
| SpEd Gen Curric Test I | 2 | | Understand procedures for developing, implementing, and amending Individualized Education Programs (IEPs), Individualized Family Service Plans (IFSPs), and transition plans. | 58 | 76% | 1150 | 76% |
| SpEd Gen Curric Test I | 2 | | Understand types and characteristics of various assessments. | 58 | 73% | 1150 | 76% |
| SpEd Gen Curric Test I | 2 | | Understand uses of instructional and assistive technologies to support the communication and learning of students with disabilities. | 58 | 67% | 1150 | 71% |
| Test | Subarea # | Objective Type | Objective Name | # of Takers - UWG | Objective Score - UWG | # of Takers - GA | Objective Score - GA |
| SpEd Gen Curric Test II | 1 | M/C | Understand principles and methods of planning and delivering instruction for students with disabilities. | 54 | 64% | 1114 | 67% |
| SpEd Gen Curric Test II | 1 | M/C | Understand strategies and techniques for promoting the development of communication, social, and life skills of students with disabilities. | 54 | 64% | 1114 | 72% |
| SpEd Gen Curric Test II | 1 | M/C | Understand strategies for managing the learning environment to create a safe, supportive, and inclusive classroom climate that promotes the development and learning of students with disabilities. | 54 | 73% | 1114 | 72% |
| SpEd Gen Curric Test II | 1 | M/C | Understand the development and implementation of effective behavior management and behavior intervention strategies for students with disabilities. | 54 | 62% | 1114 | 68% |
| SpEd Gen Curric Test II | 2 | M/C | Understand how to communicate and collaborate with colleagues, administrators, service providers, and community agencies to help students with disabilities achieve desired learning outcomes. | 54 | 68% | 1114 | 71% |
| SpEd Gen Curric Test II | 2 | M/C | Understand how to communicate and collaborate with students with disabilities and their families to help students achieve desired learning outcomes. | 54 | 73% | 1114 | 76% |
| SpEd Gen Curric Test II | 2 | M/C | Understand the historical, social, and legal foundations of the field of special education. | 54 | 73% | 1114 | 70% |

| | | | | | | | |
|--|---|-----|---|----|-----|------|-----|
| SpEd Gen Curric Test II | 2 | M/C | Understand the professional, ethical, and legal roles and responsibilities of the special educator. | 54 | 76% | 1114 | 76% |
|--|---|-----|---|----|-----|------|-----|